

# Accommodation Fees

ACCOMMODATION TYPE	1 - 7 WEEKS PRICE €	8 - 23 WEEKS PRICE €	24+ WEEKS PRICE €
<b>SHARING</b> (three or four persons in a bedroom)			
Student House (SC)	150	145	140
Sidra Apartments (SC)	155	150	145
Hostel (SC)	160	155	150
Garden View - Two Bedroom Apartment (SC)	170	165	160
Amber Court (SC)	175	170	165
Garden View - One Bedroom Apartment (SC)	180	175	170
Host Family (HB)	215	205	195
High Season Supplement	80	80	n/a
<b>TWIN</b> (two persons in a bedroom)			
Student House (SC)	175	155	145
Sidra Apartments (SC)	185	165	150
Hostel (SC)	195	175	155
Garden View - Two Bedroom Apartment (SC)	215	195	175
Amber Court (SC)	220	200	180
St. Andrews Suites - Two Bedroom Suite (SC)	225	205	185
Sunshine Court - Two Bedroom Suite (SC)	225	205	185
Garden View - One Bedroom Apartment (SC)	235	215	195
St. Andrews Suites - One Bedroom Suite (SC)	245	225	205
Sunshine Court - One Bedroom Suite (SC)	245	225	205
Host Family (HB)	235	225	215
High Season Supplement	80	80	n/a
<b>SINGLE</b> (one person in a bedroom)			
Sidra Apartments (SC)	235	215	195
Garden View - Two Bedroom Apartment (SC)	295	280	255
Amber Court (SC)	305	285	265
St. Andrews Suites - Two Bedroom Suite (SC)	315	295	275
Sunshine Court - Two Bedroom Suite (SC)	315	295	275
Garden View - One Bedroom Apartment (SC)	335	315	295
St. Andrews Suites - One Bedroom Suite (SC)	355	335	315
Sunshine Court - One Bedroom Suite (SC)	355	335	315
Host Family (HB)	305	295	285
High Season Supplement	80	80	n/a

SC – Self Catering HB – Half Board

## LOW SEASON

01.01.2024 - 15.06.2024  
25.08.2024 - 31.12.2024

## HIGH SEASON

16.06.2024 - 24.08.2024

ACCOMMODATION  
HIGH SEASON  
SUPPLEMENT  
€80 PER WEEK

NO HIGH SEASON SUPPLEMENT  
ON ACCOMMODATION FEES FOR  
STAYS OF 24 WEEKS AND OVER.  
(NOT APPLICABLE FOR HOST  
FAMILY STAYS)

## CATERING OPTIONS

### Continental Breakfast

€61.25 per week  
(for 7 breakfasts)

### Packed Lunch

€61.25 per week  
(for 7 lunches)

### Dinner Three Course

€122.50 per week  
(for 7 dinners – meal  
includes beverage)

### Special Diet Supplement

€14 Breakfast per week  
€7 Packed Lunch per week  
€14 Dinner per week

## ACCOMMODATION INFORMATION

- Only nationality in the room (subject to availability) €60.
- Check-in on the day of arrival is at 14:00.  
An earlier check-in is possible at an additional fee of one night.
- Check-out on the day of departure is at 10:00.  
A later check-out is possible at an additional fee of one night.
- Private Bathroom supplement in a host family €60 per week.
- Launderette available on campus: €6 wash / €4 dry.
- Travel Insurance €12.50 per week (minimum two weeks).

All prices are inclusive of the applicable VAT rates in Malta and any other taxes or charges. ECO TAX is not included. ECO TAX is applicable to all students aged 18 and over. €0.50 per night, capped at a maximum of €5 per visit.  
A refundable damage deposit of €100 will be collected from each student on arrival – this does not apply to students staying with host families.  
A safety deposit box can be hired at the School Reception upon request at €10.



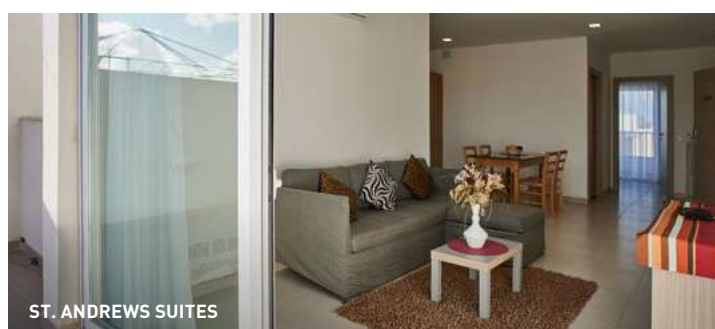
SUNSHINE COURT

## NOTES

- Students travelling alone can book twin/triple accommodation. Students, who would like to share the same bedroom, are to send their reservations together. Whilst the school will do its utmost to accommodate such requests, these cannot be guaranteed.
- The School reserves the right to allocate students in alternative accommodation of a similar or better standard (based on the value) without prior notification where circumstances beyond the school's control necessitate such changes.
- Extra nights are charged on a pro-rata basis (based on the charge for one week of accommodation); however the charge for a whole week will apply for 5 or 6 extra nights.

## ACCOMMODATION

<div> <div>✓ AVAILABLE</div> <div>A ACROSS THE ROAD FROM THE SCHOOL</div> <div>I IN THE SAME BUILDING AS THE SCHOOL</div> <div>W WITHIN WALKING DISTANCE OF THE SCHOOL</div> </div> <div> <div>SLIEMA</div> <div>€ AT A CHARGE (PAID LOCALLY)</div> <div>P PRIVATE</div> <div>S SHARED (IN THE ACCOMMODATION)</div> <div>⌚ AT PRESET TIMES</div> </div>	SHARED	TRIPLE	TWIN	SINGLE	NO. OF BEDROOMS	WI-FI	TV	KITCHEN	BATHROOM	AIR-CONDITIONING IN BEDROOM	AIR-CONDITIONING IN COMMON AREA	FAN	LOCATION
St. Andrews Suites - One Bedroom			✓	✓	1	✓	P	P	P	⌚	⌚		A
Sunshine Court - One Bedroom Suite			✓	✓	1	✓	P	P	P	24/7	24/7		⚡
Garden View - One Bedroom Apartment		✓	✓	✓	1	✓	P	P	P	⌚			I
St. Andrews Suites - Two Bedroom Apartment			✓	✓	2	✓	S	S	1	⌚	⌚		A
Sunshine Court - Two Bedroom Suite			✓	✓	2	✓	S	S	2	24/7	24/7		⚡
Garden View - Two Bedroom Apartment		✓	✓	✓	2	✓	S	S	1/2	⌚	⌚		I
Amber Court		✓	✓	✓	2/3	✓	S	S	S	⌚	⌚		A
Hostel		✓	✓		15	✓	P	S	P	€	⌚	✓	A
Sidra Apartments	✓	✓	✓	✓	3/4	✓	S	S	S	⌚		✓	A
Student House	✓	✓	✓		10	✓	S	S	S		⌚	✓	A
Host Family		✓	✓	✓		✓	S		S			✓	W



ST. ANDREWS SUITES



AMBER COURT